

Parc Rosslyn

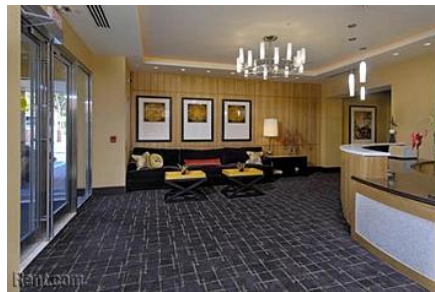
1531 North Pierce Street,
Rosslyn, VA 22209

Apartment Features

- ◆ Ceramic tile floors in kitchen and baths
- ◆ Full-height ceramic tile tub surrounds
- ◆ GE Energy Star® appliances
- ◆ Glasstop cooking range
- ◆ Washer/dryer in each residence
- ◆ Energy Star® lighting package
- ◆ Programmable thermostats

Community Features

- ◆ Clubroom on the top floor with wireless Internet access and dramatic views of the monument
- ◆ Refreshing rooftop pool
- ◆ Concierge services
- ◆ Business center/conference room with wireless Internet access
- ◆ Fitness center with state-of-the-art cardio theatre
- ◆ Patio/grilling area
- ◆ Indoor bike storage
- ◆ Underground parking
- ◆ Pet friendly*



• For Reservations please call 703-448-0505

Driving Directions

From I-495, take Rte. 50 E toward DC. Take the ramp toward 14th St./N. Queen St./Fairfax Dr. R on Fairfax Dr. L on N. Pierce St. to property. From DC: Follow the Roosevelt Br. to Rte. 50; then same as above.

